

PM SHRI K.V.KATHUA

Winter Holiday Homework

Class 6th A&B Subject – Mathematics

Important: Do the holiday home work in separate note-book.

First learn and then write the tables from 2 to 20.

Prepare learner's diary (on chapters of second term) and MDP. Prepare

one art integrated project on any topic of syllabus.

Solve the below given questions.

Taking Sarita's present age to be y years.

What will be her age 5 years from now?

What was her age 3 years back?

A piece of string is 30cm long. What will be the length of each side if the string is used to form a regular hexagon?

Are 30, 40, 45 and 60 in proportion?

The number of Mathematics books sold by a shopkeeper on six consecutive days is shown below. Draw a pictograph for the following

Days	Sunday	Monday	Tuesday	Wednesday	Thursday	Friday
Number of books sold	65	40	30	50	20	70

Anish made 42 runs in 6 overs and Anup made 63 runs in 7 overs. Who made

more runs per over?

A floor is 5 m long and 4 m wide. A square carpet of side 3 m is laid on the floor. Find the area of the floor that is not carpeted?

Shaina pays Rs. 7500 as rent for 3 months. How much does she have to pay for a whole year, if the rent per month remains same?

Divide Rs 60 in the ratio 1:2 between Kriti and Kiran. Find the ratio:

5 m to 10 km

ii) 5 kg to 50 g

iii) 50 paise to Rs. 5

Change the following statements using expressions into statement in ordinary language. A notebook costs Rs p . A book costs Rs $3p$.

Tony puts q marbles on the table. He has 8 marbles in his box. What fraction of these circles have 'x' in them?



Write the natural numbers from 102 to 113. What fraction of them are prime numbers?

Sunita travels 15 km 268 m by bus, 7 km 7 m by car and 500 m by foot in order to reach her school. How far is her school from her residence?

Kavita has 44 cassettes. She gives $\frac{3}{4}$ of them to Sonia. How many does Sonia get? How many does Kavita keep?

Mukesh has a box of 24 pencils. He gives half of them to Sunita. How many does Sunita get? How many does Mukesh still have?

Represent $0/10$, $1/10$, $5/10$ and $10/10$ on a number line.

Express as centimeter (cm) using decimals:

(i) 5 mm

(ii) 60 mm

(iii) 175 mm

(iv) 4 cm 5 mm

Express as kilogram (kg) using decimals:

शीतकालीन अवकाश कार्य

(दिसंबर 25, 2023 से जनवरी 14, 2024)

महत्त्वपूर्ण निर्देश - कक्षा छठी तथा नौवीं के विद्यार्थी अवकाश कार्य एक नई 10 ₹ की उत्तरपुस्तिका पर करेंगे । ग्यारहवीं एवं 12 वीं के विद्यार्थी अपने विद्यालय की उत्तरपुस्तिका पर ही शीतकालीन कार्य करेंगे ।

कक्षा छठी -

1 अर्द्धवार्षिक परीक्षा के पश्चात करवाया गया पाठ्यक्रम याद करें ।

2 अनुच्छेद लेखन –

- क) सच्चा मित्र
- ख) चाचा नेहरू
- ग) मेरी मां।

3 पत्र लेखन –

क) परिश्रम का महत्त्व समझाते हुए छोटे भाई को पत्र लिखें।

ख) अपने विद्यालय में खेल सामग्री मंगवाने हेतु प्राचार्य महोदय को प्रार्थना पत्र लिखें।

□□□□□□□□ □□□□ □□□□□□□□ (2023-24)

□□□□□ □□□ □ (□□□□□)

1 □□□□□□□□□□□□□□□□□□ □□ □□□□□□ □□□□□□ □□□□ □□□□ □

2 □□□□□□□□ □□□□ –

- 1) □□□□□ □□□□□
- 2) □□□□ □□□□□
- 3) □□□□ □□□ □

3 □□□□ □□□□ –

- 1) □□□□□□□ □□ □□□□□□ □□□□□ □□□ □□□ □□□□ □□□□ □
- 2) □□□□ □□□□□□□ □□□ □□ □□□□□□ □□□□□□ □□□□ □□□□□□□ □□□□ □□

4 □□ □□□□□□ □□ □□ □□□□□□ □□ □□□ □□ □□ □□□□ □□□□□

5 □□□□□□□□ □□□□ □□ □□□□□□□□ □□□□□

कक्षा- षष्ठी अ,ब

क्रियाकलाप:-

- 1. अकारान्त पुल्लिंग शब्द: - बालक
- 2. आकारान्त स्त्रीलिङ्ग शब्द:-बालिका
- 3.पाठ :- सूक्तिस्तबकः, क्रीडा स्पर्धा, कृषिका: कर्मवीराः, दशमः त्वम् असि स्मरण करें।

4. लर्नर डायरी लिखें पाठ 8, 9, 10, 12, 13 तक।

5.परियोजना कार्यम्:-

विमानयानम् रचयाम गीत स्मरण करें और चार्ट पर लिखें।

CLASS – VI

SUBJECT – SCIENCE

1- What are the transparent translucent and opaque object ? Give one example each.

2- What is reflection of light ?

3-Write the five characteristics of living beings.

4-What is motion? Write the different types of motion with

examples.5- How does an earthworm shows the movement.

6- What are the luminous and non luminous objects? Give examples

7. How cactus adapted to surviving in a desert?

8. What is the function of a stem in plant

9.Name the four objects which made from wood.

10. Name the animals that show movements in the following ways -

a) Flies with the help of forelimbs modified into wings. b) Uses muscular foot

11.List three precautions which should be taken while using a scale for measuring a length. 12.

Give one example for the following

a) Rectilinear Motion

b) A combination of two or more motions

13 -While measuring the length of a book, the reading of the scale at one end is 3.0 cm and at the other end is 22.4 cm. What is the length of the book?

14 – Draw a simple closed circuit with the help of a bulb, two cells, connecting wires and a key. Also mark the direction of current.

15-What is a joint? Name the part of the body where immovable joints are present? Which jaw is a movable jaw?

16-Name two abiotic factors important for the growth of plants .

17- Name the part of the plant which produces its food. Name this process

18- Give an example of a non-living thing, which shows any two characteristics of living things.

19- How is electricity produced in an electric cell?

20- Name three factors essential for the formation of a shadow.

21- Name the gas which is (i) consumed (ii) produced during burning

22- What is habitat? Name any two aquatic habitats.

23- List the five activities that are possible due to the presence of

air. 24- What are parasites? Give two examples of parasites.

25- Make chart/model on atleast one of the following

- (i) Parts of flower (ii) tap root and fibrous root (iii) reticulate and parallel venation (iv) Human skeleton (v) Torch (vi) Electric circuit

SUBJECT: SO. ST.

CLASS VI

1. Make a Project File on state Gujarat.

2. Learn chapter

(H6) New questions and ideas

(G5) Major Domains of Earth

(P5) Rural Administration

(H7) From kingdom to an empire

3. Read chapter no. 8 of history

Class 6th A&B

Subject – Mathematics

Important: Do the holiday home work in separate note-book.

(i) First learn and then write the tables from 2 to 20.

(ii) Prepare learner's diary (on chapters of second term) and MDP.

(iii) Prepare one art integrated project on any topic of syllabus.

(iv) Solve the below given questions.

1. Taking Sarita's present age to be y years.

i. What will be her age 5 years from now?

ii. What was her age 3 years back?

2. A piece of string is 30cm long. What will be the length of each side if the string is used to form a regular hexagon?

3. Are 30, 40, 45 and 60 in proportion?

4. The number of Mathematics books sold by a shopkeeper on six consecutive days is shown below. Draw a pictograph for the following

Days	Sunday	Monday	Tuesday	Wednesday	Thursday	Friday
Number of books sold	65	40	30	50	20	70

5. Anish made 42 runs in 6 overs and Anup made 63 runs in 7 overs. Who made more runs per over?

6. A floor is 5 m long and 4m wide. A square carpet of sides 3m is laid on the floor. Find the area of the floor that is not carpeted?

7. Shaina pays Rs.7500 as rent for 3 months. How much does she have to pay for a whole year, if the rent per month remains same?

8. Divide Rs60 in the ratio 1:2 between Kriti and Kiran.

PM Shri Kendriya Vidyalaya Kathua
Winter Holiday Homework

9. Find the ratio:

- i) 5m to 10km ii) 5 kg to 50g iii) 50 paise to Rs. 5

10. Change the following statements using expressions into statement in ordinary language.

- i) A notebook costs Rs p . A book costs Rs $3p$.
ii) Tony puts q marbles on the table. He has $8q$ marbles in his box.

11. What fraction of these circles have 'x' in them?



12. Write the natural numbers from 102 to 113. What fraction of them are prime numbers?

13. Sunita travels 15 km 268 m by bus, 7 km 7 m by car and 500 m by foot in order to reach her school. How far is her school from her residence?

14. Kavita has 44 cassettes. She gives $\frac{3}{4}$ of them to Sonia. How many does Sonia get? How many does Kavita keep?

15. Mukesh has a box of 24 pencils. He gives half of them to Sunita. How many does Sunita get? How many does Mukesh still have?

16. Represent $0/10$, $1/10$, $5/10$ and $10/10$ on a number line.

17. Express as centimeter (cm) using decimals:

- (i) 5 mm (ii) 60 mm (iii) 175 mm (iv) 4 cm 5 mm

18. Express as kilogram (kg) using decimals:

- (i) 8 g (ii) 150 g (iii) 2750 g (iv) 5 kg 750 g (v) 36 kg 50 g

19. Express as kilometer (km) using decimals:

- (i) 5 m (ii) 55 m (iii) 555 m (iv) 5555 m (v) 15 km 35 m

20. Rahul bought 4 kg 90 g apples, 2 kg 60 g of grapes and 5 kg 300 g of mangoes. Find the weight of the fruits he bought in all.

Winter Holiday Homework
Class 7th A&B Subject – Mathematics

Important: Do the holiday home work in separate note-book.

- (v) First learn and then write the tables from 2 to 20.
(vi) Prepare learner's diary (on chapters of second term) and MDP.
(vii) Prepare one art integrated project on any topic of syllabus.
(viii) Solve the below given questions.

Q1.. Zero has Reciprocal.

Q2. Multiplicative identity of $\frac{5}{7}$ is

Q 3. Represent the following rational numbers on number line:

1. $\frac{3}{5}$ 2. $-\frac{9}{4}$

Q4. Insert 5 rational numbers between $\frac{1}{3}$ and $\frac{2}{3}$.

Q5. Write the additive inverse of each of following-

- (a) $\frac{4}{5}$ (b) $-\frac{8}{7}$

Q6. Write the following numbers in standard form- 1) 34500000 2) 24567.789

Q7. Which rational number is greater in $\frac{-3}{7}$, $\frac{-5}{9}$

Q8. Write four rational number equivalent to $\frac{-3}{7}$.

PM Shri Kendriya Vidyalaya Kathua
Winter Holiday Homework

Q9. Simplify the followings

(i) $\frac{3}{4} + \frac{-2}{3} + \frac{1}{2}$

(ii) $(\frac{-9}{15} \div \frac{27}{60}) \times \frac{5}{16}$

Q10. Divide: (i) 0.058 by 100

(ii) 0.08085 by 0.35

Q11. Simplify

1) $2x(4 - x) + 3x(x + 4)$

2) $x(x - 5) + 3x(3 + 4x)$

3) $4(2x - 9)$

4) $4x(8x - 6) + 6$

Q12. Find value of expression at x=2

1) $2x(5x - 20)$

2) $4x(5 + 7x)$

Q13. Find the perimeter and area of a square of side 14cm.

Q14. Find the perimeter and area of a rectangle of length 12cm and breadth 10cm.

Q15. Find the circumference of a circle of radius 8cm.

Q16. Find the area of a circle of radius 12cm.

Q17. If the radius of a circle is 25cm, what will be its diameter?

Q18. If the diameter of a circle is 24cm, what will be its radius ?

Q19. Ramesh has taken 5 rounds of a circular park of diameter 12cm, how much distance he has covered ?

Q20. The perimeter of a rectangular park is 260m, if its length is 25cm .what will be its breadth and area.

कक्षा- सप्तमी अ,ब

विषय:- संस्कृत

1. पाठ - त्रिवर्णः ध्वजः, अहमपि विद्यालयम् गमिष्यामि, विश्वबन्धुत्वं, समवायोः हि दुर्जयः

अभ्यास कार्य स्मरण करके लिखें।

2. धातु रूपाणि:- भू, अस्, लिख् पाँचों लकारों में रूप लिखें।

4. लर्नर डायरी लिखें। पाठ 8

से 12 तक।

5. परियोजना कार्यम्:-

हमारे राष्ट्रध्वज को कब स्वीकार किया गया। इसमें तीन रंगों की क्या- 2 विशेषताएँ हैं और यह किसका प्रतीक है संस्कृत में लिखें।

Subject:SST

CLASS VII

1. Make a scrapbook on the state of Gujarat.

2. Learn chapter for Pt 2

- Tribes, Nomads and settled communities
- Water
- Women change the world
- Devotional path to divine

3. Read chapter Eighteenth century- Political Formations.

Subject:SCIENCE

CLASS VII

Q1. Draw and label all the parts of a bisexual flower.

Q2.What are the various methods of seed dispersal and how are the seeds adapted for that?

Q3. What precautions need not be taken while using electric gadgets/appliances/circuit?

Q4. In the formation of a rainbow, what acts as tiny prisms?

Q5. Name the type of lens which diverges a beam of parallel rays of light.

Q6. Mention the type of image formed on a cinema screen.

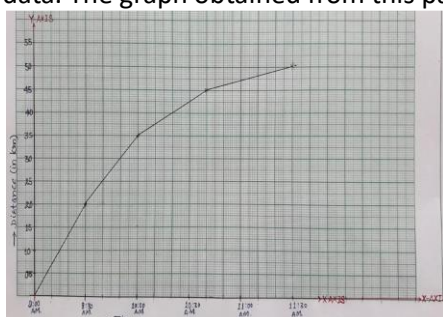
PM Shri Kendriya Vidyalaya Kathua

Winter Holiday Homework

Q7. Harshit is fond of travelling. He planned a country ride with his friends during coming vacation. He started his journey with his friends from his school at Guwahati towards Shillong.



They started their journey at 9:00 A.M. on due date. They reached at the first stoppage at 9:30 A.M. covering a distance of 20 km. The rest of the journey was on a curved road from starting to the end. In the next part of the journey, they covered a distance of 15 km and reached at second stoppage at 10:00 A.M. Then, they started their journey towards hills and covered a distance of 10 km at 10:40 A.M. In the last part of the journey, they merely covered a distance of 5 km and reached their final destination at 11:30 A.M. They used speedometer, odometer and wrist watch to keep records of their journey data. The graph obtained from this passage is as following -



Based on this passage answer the following questions-

Q.7.1 How much distance was covered all together by Harshit and his group?

- (a) 30 km (b) 40 km
(c) 50 km (d) 55 km

Q.7.2 Towards the end of journey the distance being covered is decreasing with respect to time. Can the questions listed below be answered by scientific research? Circle Yes or No for each question.

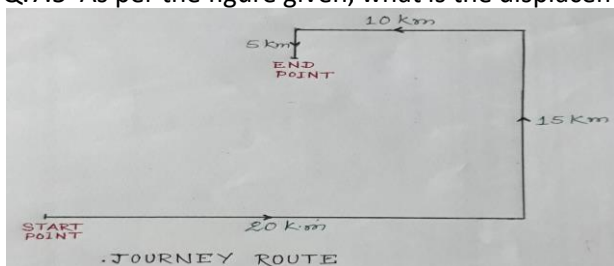
- a. The odometer is helpful in plotting Time –distance graph Yes/No
b. Dissipation of biological energy, gravity, height of road have caused less coverage of distance.

Yes/No

Q.7.3 What is the speed at which distance is covered between second and third stoppage? Express it in S.I Unit (m/s) also.

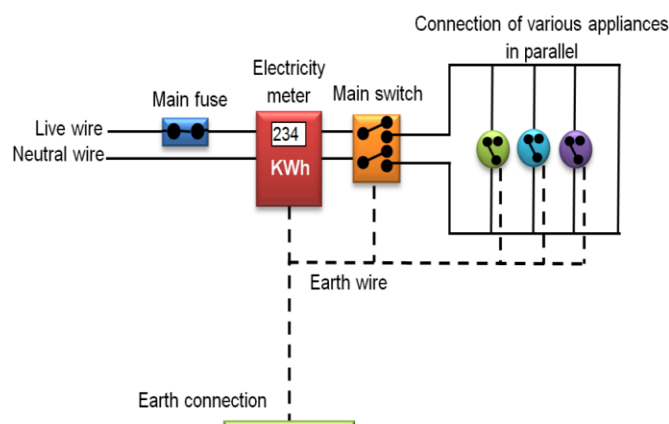
Q.7.4 Explain the factors responsible for variation in the distance covered by Harshit and his group.

Q.7.5 As per the figure given, what is the displacement from starting to the end point?



Q8.

PM Shri Kendriya Vidyalaya Kathua
Winter Holiday Homework



In our homes, either the overhead electric poles or underground cables support the power supply flowing through the main supply. One of the wires in this supply covered with insulation in the colour red is the live wire (or positive), and another wire coloured black is the neutral wire (or negative). At the meter-board, these wires pass into an electric meter through the main fuse. The main switch, live wire, and the neutral wire are in connection to the line wires in our homes; these wires then supply electricity to separate electric circuits within the house. The metallic assemblage of an electric iron, toaster, table fan, fridge, constitutes the earth wire, giving a low-protection directing way for the current. In this way, it guarantees that any leakage of the current from the metallic body of the machine keeps its capability to that of the earth, and the person doesn't get a serious electric shock. Various appliances constitute live and impartial wires. An electric fuse is used as a safety device for the protection of electric circuits and appliances due to short-circuiting or overloading of the electric circuits. The electric fuse is a piece of wire having a very low melting point and high resistance. When a high current flows through the electric circuits due to short circuit or overloading, the fuse wire heats up and melts. The circuit is broken and the current stops flowing thereby saving the electric circuits and appliance from any damages. The capacities of fuse wire are rated as 1A, 2A, 3A, 5A, 10A, and 15A. An electric fuse composes pure tin or alloy of copper and tin.

Question 8.1:

Which wire is supposed to be used to prevent user from getting severe shock, while handling metallic body appliances?

- A. Live wire B. Neutral wire C. Earth wire D. Fuse wire

Question 8.2:

The transmission of electricity is done at high voltage. This is possibly because of which of the following reason-

- A. To reduce power losses B. To reduce heating of transmission lines
C. To reduce current flowing through the transmission lines D. All the above

Question 8.3:

The material used for making fuse should have "low melting point & high resistivity". Here high resistivity for what purpose?

Question 8.4: Refer last four lines of the last paragraph, and give the response for the following two statement. statement response

1. 3A fuse can be used in 15A current circuit Yes / No
2. 5A fuse can be used in 3A current current Yes / No

Q9. A simple pendulum takes 32s to complete 20 oscillations, what is the time period of the pendulum?

Q10. Salma takes 15 minutes from her house to reach her school on a bicycle. If the bicycle has a speed of 2 m/min, calculate the distance between her house and the school.

PM Shri Kendriya Vidyalaya Kathua
Winter Holiday Homework

कक्षा- सातवीं अ,ब

विषय:- हिन्दी

1. क्रियाकलाप:- 'नीलकंठ' पाठ में आए जानवरों में से किसी एक के विषय में जानकारी एकत्र कीजिए।
2. आपका स्थानीय व्यंजन कौन सा है? उसकी विधि पता करके लिखिए।
3. पाठ- रहीम के दोहे, खानपान की बदलती तसवीर, एक तिनका, नीलकंठ, भोर और बरखा स्मरण करें।

4. लर्नर डायरी लिखें। पाठ- 11,12,14,15,16

5. परियोजना कार्य:- भारत के किन्हीं पाँच प्रदेशों के स्थानीय व्यंजनों के नाम एवं विशेषताएँ बताइए। व्यंजनों के चित्र भी चिपकाएँ या ड्राईंग बनाएँ।

Class 7th A&B Subject – Mathematics

Important: Do the holiday home work in separate note-book.

- (i) First learn and then write the tables from 2 to 20.
- (ii) Prepare learner's diary (on chapters of second term) and MDP.
- (iii) Prepare one art integrated project on any topic of syllabus.
- (iv) Solve the below given questions.

Q1.. Zero has Reciprocal.

Q2. Multiplicative identity of $\frac{5}{7}$ is

Q 3. Represent the following rational numbers on number line:
1. $\frac{3}{5}$ 2. $-\frac{9}{4}$

Q4. Insert 5 rational numbers between $\frac{1}{3}$ and $\frac{2}{3}$.

Q5. Write the additive inverse of each of following-(a) $\frac{4}{5}$ (b) $-\frac{8}{7}$

Q6. Write the following numbers in standard form- 1) 34500000 2) 24567.789

Q7. Which rational number is greater in $-\frac{3}{7}$, $-\frac{5}{9}$

Q8. Write four rational number equivalent to $-\frac{3}{7}$.

Q9. Simplify the followings

(i) $\frac{3}{2} + \frac{-2}{3} + \frac{1}{4}$

(ii) $(\frac{-9}{7} \div \frac{27}{5}) \times \frac{5}{2}$

PM Shri Kendriya Vidyalaya Kathua
Winter Holiday Homework

Q10. Divide: (i) 0.058 by 100 (ii) 0.08085 by 0.35

Q11. Simplify

1) $2x(4 - x) + 3x(x + 4)$

2) $x(x - 5) + 3x(3 + 4x)$

3) $4(2x - 9)$

4) $4x(8x - 6) + 6$

Q12. Find value of expression at $x=2$

1) $2x(5x - 20)$

2) $4x(5 + 7x)$

Q13. Find the perimeter and area of a square of side 14cm .

Q14. Find the perimeter and area of a rectangle of length 12cm and breadth 10cm . Q15. Find the circumference of a circle of radius 8cm .

Q16. Find the area of a circle of radius 12cm .

Q17. If the radius of a circle is 25cm , what will be its diameter? Q18. If the diameter of a circle is 24cm , what will be its radius ?

Q19. Ramesh has taken 5 rounds of a circular park of diameter 12cm , how much distance he has covered ?

Q20. The perimeter of a rectangular park is 260m , if its length is 25cm .what will be its breadth and area.

Class 8th A&B Subject – Mathematics

Important: Do the holiday home work in separate note-book.

First learn and then write the tables from 2 to 20.

Prepare learner's diary (on chapters of second term) and MDP. Prepare

one art integrated project on any topic of syllabus.

Solve the below given questions.

Q1	The expression $x^4y^3 - 3xyz + 2z^2$ is binomial. True/False
Q2	Find the area of a rhombus whose side is 5 cm and whose altitude is 4.8cm . if one of its diagonals is 8 cm long, find the length of the other diagonal.
Q3	The floor of a building consists of 3000 tiles which are rhombus shaped and each of its diagonals are 45 cm and 30 cm in length. Find the total cost of polishing the floor, if the cost of polishing is Rs. 4 per cm^2 .
Q4	A square and a rectangle have the same perimeter. Calculate the area of the rectangle if the side of the square is 60 cm and the length of the rectangle is 80 cm .

PM Shri Kendriya Vidyalaya Kathua
Winter Holiday Homework

Q5	Express 0.000000003526 in Standard form
Q6	“If the number of articles purchased increases, the total cost also increases” is an Example of direct proportion? (True/ False)
Q7	“The time taken for a fixed journey and the speed of the vehicle” is an example of Indirect proportion? (True/False)
Q8	Simplify $20ab(a^2 - b^2) \div 5b(a - b)$
Q9	Write the ordinate of the point whose co-ordinate is (3, -2)
Q10	Using identity, evaluate 97^2
Q11	Calculate the height of a cuboid which has a base area of 180 cm^2 and volume is 900 cm^3 .
Q12	A cuboidal box of dimensions $1 \text{ m} \times 2 \text{ m} \times 1.5 \text{ m}$ is to be painted except its bottom. Calculate how much area of the box has to be painted.
Q13	If 15 men can do a work in 12 days, how many men will do the same work in 6 days?

Q14	A garrison of 120 men has provisions for 30 days. At the end of 5 days, 5 more men joined them. How many days can they sustain on the remaining provision?
Q15	If two cardboard boxes occupy 500 cubic centimetres space, then how much space is required to keep 200 such boxes?
Q16	Add: $x + y + xy$, $x - z + yx$, and $z + x + xz$
Q17	Subtract: $3xy + 5yz - 7xz + 1$ from $-4xy + 2yz - 2xz + 5xyz + 1$
Q18	Factorise: $x^2 + 6x + 8$.
Q19	Factorise: $2x^2yz + 2xy^2z + 4xyz$.

Subject: SST

CLASS VIII

1. Make a scrapbook, Chart, model or project on the state of Gujarat.
2. Learn chapters:

H5-When people rebel 1857 and after

H6-Civilising the native educating the nation

G4-Industries

P5-Understanding Marginalization

3. Read chapter Public Facilities

कक्षा - अष्टमी अ,ब

1. क्रियाकलाप:- सावित्री बाई फुले जी की जीवनी लिखें।
2. पाठ- संसारसागरस्य नायकाः,
सप्तभगिन्यः, नीतिनवनीतम्, सावित्री बाई फुले स्मरण करें।
3. 'सप्तभगिनी' यह उपनाम है। उत्तर - पूर्व के सात राज्य विशेष को उपाधि दी गयी है। इन राज्यों के प्राकृतिक सौन्दर्य का वर्णन कीजिए।
4. विद्यायाः महत्त्वम् विषय पर दस श्लोक लिखें।
5. लर्नर डायरी लिखें। पाठ- 8, 9, 10, 11, 12
6. परियोजना कार्यम् :- पाठ- सावित्री बाई फुले / कः रक्षति कः रक्षितः ।

कक्षा आठवीं अ एवं ब

Subject: (हिंदी)

प्रश्न 1 अनुच्छेद लेखन:-

1. क्रिसमस पर्व

2. मेरी माँ

3. सच्चा मित्र

प्रश्न 2 पत्र लेखन -

(क) परिश्रम का महत्त्व समझाते हुए छोटे भाई को पत्र लिखें।

(ख) अपने विद्यालय में खेल सामग्री मंगवाने हेतु प्राचार्य महोदय को प्रार्थना पत्र लिखें।

प्रश्न 3 दस उपसर्ग और दस प्रत्यय से तीन तीन नए शब्द बनाओ।

प्रश्न 4 एक आदर्श विधार्थी में कौन कौन से गुण होने चाहिए, लिखो।

प्रश्न 5. पाँच सुलेख लिखना है।

प्रश्न 5 किसी हिंदी पुस्तक को पढ़कर उस पर बुक रिव्यू लिखो।

प्रश्न 6 अर्ध वार्षिक परीक्षा के बाद पढ़े हुए पाठों के प्रश्नों के उत्तर याद करने हैं

Class 8th A&B

Subject – Mathematics

Important: Do the holiday home work in separate note-book.

- (ix) First learn and then write the tables from 2 to 20.
- (x) Prepare learner's diary (on chapters of second term) and MDP.
- (xi) Prepare one art integrated project on any topic of syllabus.
- (xii) Solve the below given questions.

Q1	The expression $x^4y^3-3xyz+2z^2$ is binomial. True/False
Q2	Find the area of a rhombus whose side is 5 cm and whose altitude is 4.8cm. if one of its diagonals is 8 cm long, find the length of the other diagonal.
Q3	The floor of a building consists of 3000 tiles which are rhombus shaped and each of its diagonals are 45 cm and 30 cm in length. Find the total cost of polishing the floor, if the cost of polishing is Rs. 4 per cm^2 .
Q4	A square and a rectangle have the same perimeter. Calculate the area of the rectangle if the side of the square is 60 cm and the length of the rectangle is 80 cm.
Q5	Express 0.000000003526 in Standard form
Q6	"If the number of articles purchased increases, the total cost also increases" is an Example of direct proportion?(True/ False)
Q7	"The time taken for a fixed journey and the speed of the vehicle" is an example of Indirect proportion?(True/False)
Q8	Simplify $20ab(a^2-b^2) \div 5b(a-b)$
Q9	Write the ordinate of the point whose co-ordinate is (3, -2)
Q10	Using identity, evaluate 97^2
Q11	Calculate the height of a cuboid which has a base area of 180 cm^2 and volume is 900 cm^3.
Q12	A cuboidal box of dimensions $1 \text{ m} \times 2 \text{ m} \times 1.5 \text{ m}$ is to be painted except its bottom. Calculate how much area of the box has to be painted.
Q13	If 15 men can do a work in 12 days, how many men will do the same work in 6 days?
Q14	A garrison of 120 men has provisions for 30 days. At the end of 5 days, 5 more men joined them. How many days can they sustain on the remaining provision?
Q15	If two cardboard boxes occupy 500 cubic centimetres space, then how much space is required to keep 200 such boxes?

Q16	Add: $x + y + xy$, $x - z + yx$, and $z + x + xz$
Q17	Subtract: $3xy + 5yz - 7xz + 1$ from $-4xy + 2yz - 2xz + 5xyz + 1$
Q18	Factorise: $x^2 + 6x + 8$.
Q19	Factorise: $2x^2yz + 2xy^2z + 4xyz$.
Q20	Solve for $(4x^2 - 100) \div 6(x + 5)$
Activity	<p>1. A balanced diet should contain 40% fruits and vegetables, 30% carbohydrate, 20% protein and 10% fats. Draw a pie chart for the balanced diet.</p> <p>2. boys requires 2800 calories and girls requires 2000 calories on a daily basis for a healthy growth calculate the amount of fruits and vegetables, carbohydrate, proteins and fats on above basis percentage and draw a bar graph diagram.</p>

Holiday homework class VIII A (science)

1. Learn and write question and answer of all the chapters completed in separate copy.
Conservation of plants and animals
Reproduction in animals
Reaching the age of Adolescence.
2. Prepare and complete learner diary.
3. Draw diagrams of chapter reproduction in animals.
4. Revise chapters for periodic test-2

Subject: ENGLISH

CLASS VIII B,

1 Complete the written work in your notebook of the chapters taught till date

Also learn and revise

Write 2 new words daily. Find out their meanings and make sentence on your own.

2 STORY WRITING

Complete the story by using the given outlines;

A farmer had five sons _____ were strong and _____ always quarreled
_____ the farmer wanted _____ to stop quarrelling _____ wanted to live
in peace _____ words of advice _____ not have much effect _____ called
all his sons _____ bundle of sticks _____ break these sticks without separating
_____ Each of the tried one by one _____ used their full strength _____
the old man separated the sticks They could break the sticks easily _____ farmer said
_____ strong as long as it is tied up _____ will be weak if you are divided.

3 LETTER WRITING (Letter to the Editor)

Write a letter to the Editor regarding the problem of waterlogging in your area.

You are Raj / Rani of Dharma colony, Ramgarh.

4. DIARY ENTRY

You went to receive your uncle and aunts from the Bangalore railway station. Write a diary where you share your experience of the journey from home to the railway station.

4 Write an article on

Topic- The Purpose Of Education

5. Do two unseen reading passages in your notebook

Do reading practice daily, underline important words and learn spellings

Class 9th A&B

Subject – Mathematics

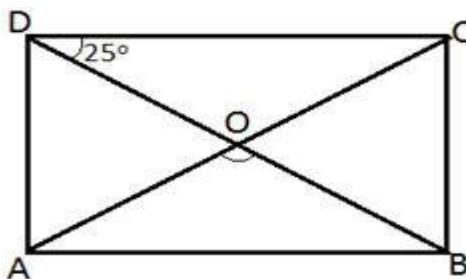
Important: Do the holiday home work in separate note-book.

First learn and then write the tables from 2 to 20.

Complete the assigned project/activity work of maths during vacation only. Learn and write all the theorems in syllabus of Geometry.

Solve the questions given below.

1. The diagonals of a _____ are equal and bisect each other at 90° ?
2. If one angle of a parallelogram is 75° , then find its other three angles.
3. In a rectangle ABCD, one diagonal is inclined to one of its sides at 25° as shown in the following figure. Find $\angle AOB$.



4. If the bisectors of all four angles of a parallelogram are made to intersect each other

then the new quadrilateral thus formed will be a:

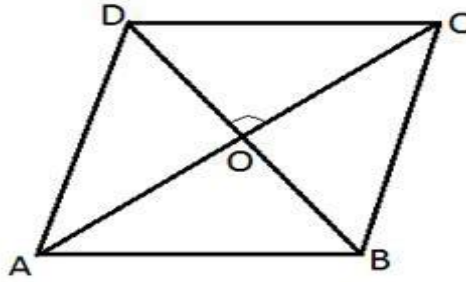
- (a) Rhombus (b) Rectangle (c) Square (d) Parallelogram

5. A square is a special type of

- (a) Rectangle (b) Rhombus (c) Parallelogram (d) All of the above

6. Two diagonals of a rhombus ABCD are intersecting each other at point

O. What is the value of $\angle DOC$?



7. Which quadrilateral is formed by the angle bisectors of a parallelogram?
8. Which of the following is/are the necessary condition(s) for a quadrilateral to be a parallelogram?
 - (a) Its diagonals bisect each other.
 - (b) Opposite angles are equal.
 - (c) Opposite sides are equal and parallel to each other
 - (d) All of the above
9. Name the quadrilateral formed by joining the mid-points of all four sides of a rectangle.
10. Area of a right angled triangle can be found using which formula?
11. When do we use Heron's formula to find the area of a triangle?
12. Find the Total Surface Area of a hemispherical solid having radius 7 cm.
13. Find the curved surface area of a right circular cone of height 15 cm and base diameter 16 cm.
14. A cone and a hemisphere have equal bases and equal volumes. What is the ratio of their heights?
15. A semi-circular sheet of paper of diameter 28 cm is bent into an open conical cup. Find the depth and capacity of the cup.
16. An ice - cream cone consists of a cone surmounted by a hemisphere. The radius of the hemisphere is 3.5 cm and height of the ice - cream cone is 12.5 cm. Calculate the volume of the ice - cream in the cone.
17. Two sides of a triangle are 3 cm and 4 cm and perimeter is 12 cm. Find its area.

18. The sides of a triangle are in the ratio 3:4:5 and perimeter is 120 cm. Find its area.

Class - IX

Subject English 

1. DESCRIPTIVE PARAGRAPH

Santosh Yadav

CHARACTER SKETCH

Lushkoff

Boy in A house is not home.

2. Do FIVE unseen comprehension reading passages in notebook

3. Do one exercise for the following topics

I. Subject verb arrangement

II Editing

III Reported speech

4 .Revise all the chapters and prepare for your PT -2

Focus on Important characters and main points of the story

5. Do reading practice daily, underline important words and learn spellings

Holiday homework class IX A & B(science)

1. Learn and write question and answer of all the chapters completed in separate copy.
 - Force and law of motion
 - Gravitation
 - Improvement in food resources
 - Structure of atom
2. Prepare portfolio based on chapter Natural resources.
3. Draw diagrams of plant cell, animal cell, plant tissues and animal tissues.
4. Revise chapters for periodic test-2

कक्षा नौवीं –

1 अर्द्धवार्षिक परीक्षा के पश्चात करवाया गया पाठ्यक्रम याद करें ।

2 अनुच्छेद लेखन –

क) नई राष्ट्रीय शिक्षा नीति

ख) नारी सशक्तिकरण

ग) सोशल मीडिया के लाभ एवं हानियां

पत्र लेखन –

1 आप छात्रावास में रहकर पढ़ाई कर रहें / रहीं हैं । अपनी दिनचर्या के बारे में बताते हुए अपनी माता जी को पत्र लिखिए ।

2 किसी प्रख्यात समाचार पत्र के संपादक के नाम पत्र लिखकर रेल आरक्षण व्यवस्था में हुए सुधार की प्रशंसा कीजिए ।

Class-IX

Subject -AI

Q1) Write the full forms of the following:

- a) AI
- b) NLP

- c) NLU
- d) 4W
- e) SDG
- f) IoT
- g) CPU
- h) ALU
- i) HTTPS
- j) WWW
- k) HTML
- l) SIM
- m) e-mail
- n) GPS
- o) ML
- p) DL

Q2) Explain in brief

I) 7C's of communication

II) 4W Canvas

III) Machines without AI

IV) AI

V) AI Applications

VI) Any two SDGs problem faced by the people on earth

VII) Types of Communication

VIII) Big Data

IX) Smart City

X) Sources of Data acquisition

XI) Four qualities of Entrepreneur

XII) Four roles of Entrepreneur

XIII) Four ways to cope up with stress

XIV) Six ways which you can adopt for increasing green and decreasing pollution

Q3) Explain in details:

a) Difference between AI and ML and DL

b) AI Project cycle all the steps

c) Barriers of Communication

d) Domains of AI in details with applications of each domain

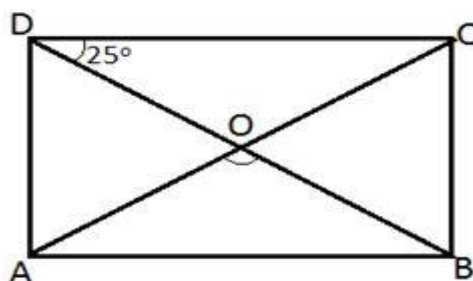
e) SDG mission statement, when and where adopted? Names of 17 SDGs.

Class 9th A&B**Subject – Mathematics**

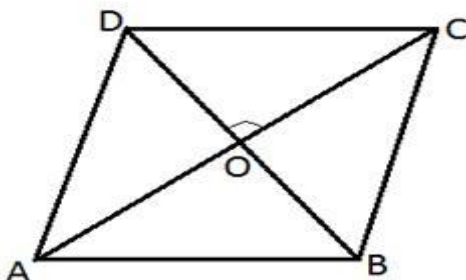
Important: Do the holiday home work in separate note-book.

- (i) First learn and then write the tables from 2 to 20.
- (ii) Complete the assigned project/activity work of maths during vacation only.
- (iii) Learn and write all the theorems in syllabus of Geometry.
- (iv) Solve the questions given below.

1. The diagonals of a _____ are equal and bisect each other at 90° ?
2. If one angle of a parallelogram is 75° , then find its other three angles.
3. In a rectangle ABCD, one diagonal is inclined to one of its sides at 25° as shown in the following figure. Find $\angle AOB$.



4. If the bisectors of all four angles of a parallelogram are made to intersect each other then the new quadrilateral thus formed will be a:
(a) Rhombus (b) Rectangle (c) Square (d) Parallelogram
5. A square is a special type of
(a) Rectangle (b) Rhombus (c) Parallelogram (d) All of the above
6. Two diagonals of a rhombus ABCD are intersecting each other at point O. What is the value of $\angle DOC$?



7. Which quadrilateral is formed by the angle bisectors of a parallelogram?

8. Which of the following is/are the necessary condition(s) for a quadrilateral to be a parallelogram?

- (a) Its diagonals bisect each other. (b) Opposite angles are equal.
(c) Opposite sides are equal and parallel to each other (d) All of the above

9. Name the quadrilateral formed by joining the mid-points of all four sides of a rectangle.

10. Area of a right angled triangle can be found using which formula?

11. When do we use Which Heron's formula to find the area of a triangle?

12. Find the Total Surface Area of a hemispherical solid having radius 7 cm.

13. Find the curved surface area of a right circular cone of height 15 cm and base diameter 16 cm.

14. A cone and a hemisphere have equal bases and equal volumes. What is the ratio of their heights?

15. A semi-circular sheet of paper of diameter 28 cm is bent into an open conical cup. Find the depth and capacity of the cup.

16. An ice - cream cone consists of a cone surmounted by a hemisphere. The radius of the hemisphere is 3.5 cm and height of the ice - cream cone is 12.5 cm. Calculate the volume of the ice – cream in the cone.

17. Two sides of a triangle are 3 cm and 4 cm and perimeter is 12 cm. Find its area.

18. The sides of a triangle are in the ratio 3:4:5 and perimeter is 120 cm. Find its area.

कक्षा ग्यारहवीं –

1 अध्याय 'रजनी' तथा 'अवकमहादेवी' के प्रश्नोत्तर अपनी उत्तरपुस्तिका पर लिखें।

2 वितान भाग – 1 के पठित तीनों अध्यायों में से प्रत्येक अध्याय से 20 वस्तुनिष्ठ प्रश्न लिख कर लाएं।

3 नीचे दिए अप्रत्याशित विषयों पर लेख लिखें।

1 अंतरराष्ट्रीय जगत में भारत का बढ़ता कद।

2 लोकतंत्र में मीडिया की भूमिका

3 नई राष्ट्रीय शिक्षा नीति

4 जीवन में अनुशासन की महत्ता।

कक्षा बारहवीं – 1.कक्षा व्हाट्स एप ग्रुप में भेजे गए दो प्रतिदर्श प्रश्नपत्रों के उत्तर लिखकर लाएं तथा कक्षा 11 वीं के शीतकालीन अवकाश में दिए गए अप्रत्याशित विषय लेखन के अंतर्गत दिए उपविषयों पर भी लेख लिखकर लाएं। कक्षा 11 वीं तथा 12 वीं के विद्यार्थी शीतकालीन अवकाश के पश्चात होने वाली आंतरिक मूल्यांकन परीक्षा हेतु अपठित काव्यांश तथा अपठित गद्यांश का अभ्यास अवश्य करें।

Subject: ENGLISH CORE

Class XI

Project Work-Internal Assessment (10 marks)

Read the play Mother's Day from Snapshots and make a project -Group Activity

Format

First Page -Cover page, with title of project and details of students

Second Page -Statement of purpose/objectives/goals

Third Page -Introduction to the writer

Fourth Page -Introduction to the theme

Fifth Page - Character Sketches

Sixth Page - Characters assigned to Students

Seventh Page - Speech Writing-Empowering Mothers

Eighth Page - Debate Writing- Are mothers given their due respect?

Ninth Page -Conclusion-convey a message

Tenth Page - List of resources/bibliography

The Project should be done on A-4 sized sheets and after the completion of the project should be

compiled within a file.

XII- ENGLISH CORE

1. Competency based questions (pdf shared in group and also discussed in class)
2. Literature extract-based questions from sample papers.
3. Difference in formats of formal and informal invitations and replies.
4. Revision of whole syllabus for PB 2.